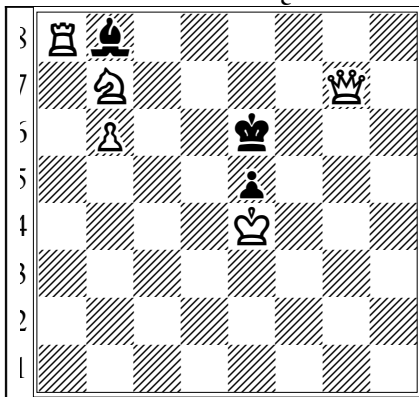
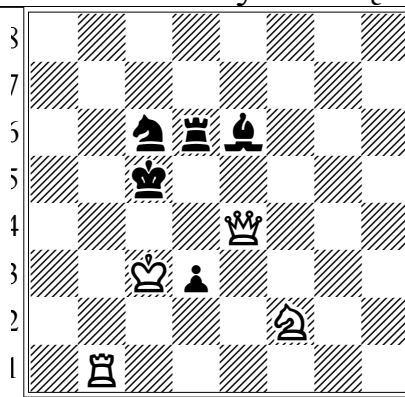


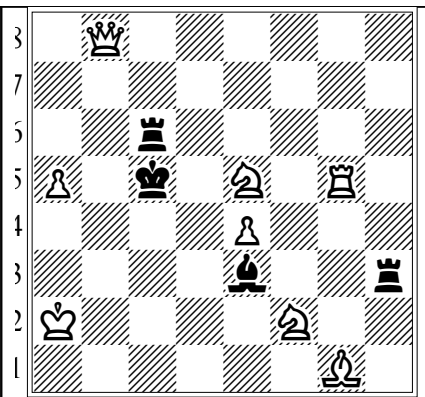
Rozwiązania zadań konkursowych - Bęsia, 01.05.2006



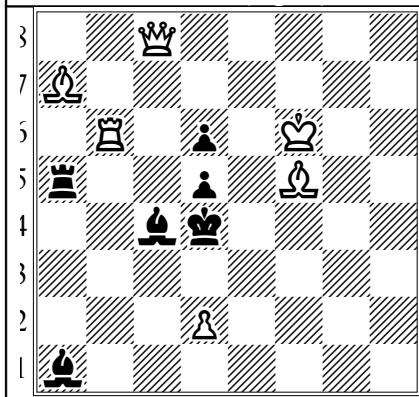
a b c d e f g h
1) R. T. Lewis 1985
mat w 2 pos.



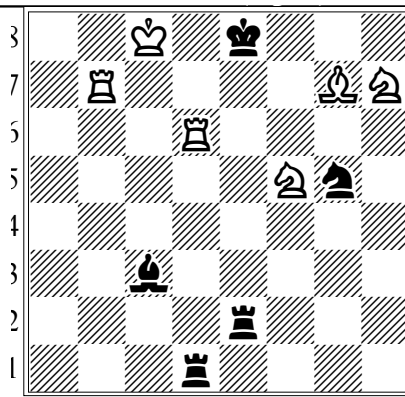
a b c d e f g h
2) F. Giegold 1962
mat w 2 pos.



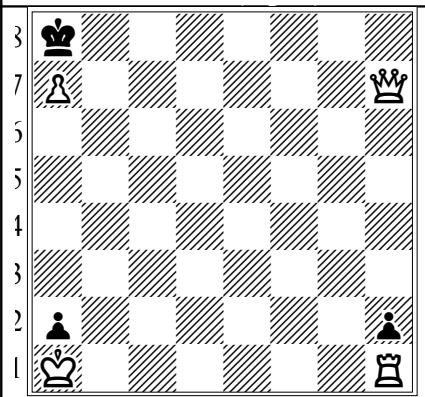
a b c d e f g h
3) B. P. Barnes 1959
mat w 2 pos.



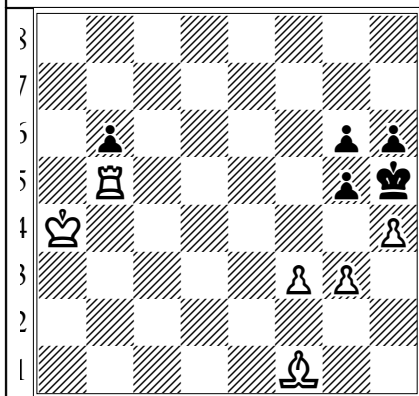
a b c d e f g h
4) G. H. Goethart 1952
mat w 2 pos.



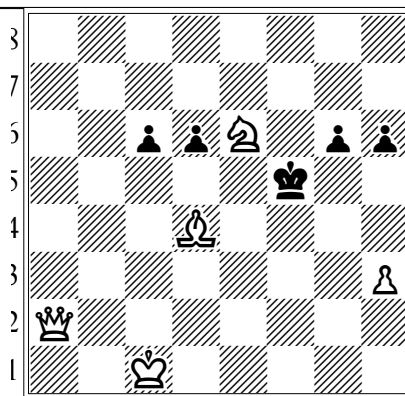
a b c d e f g h
5) M. Lipton 1966
mat w 2 pos.



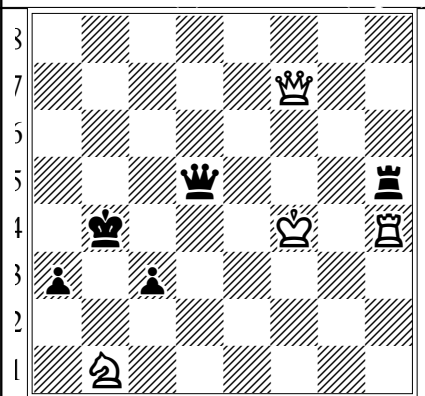
a b c d e f g h
6) P. H. Williams 1904
mat w 3 pos.



a b c d e f g h
7) H. W. Grant 1942
mat w 3 pos.



a b c d e f g h
8) N. Nadezhdin 1973
mat w 3 pos.



a b c d e f g h
9) H.M.Lommer 1965, wygrana

Rozwiązania są podane białą czcionką. Zaznaczamy cały tekst pod diagramem, kopiujemy go (np. Ctrl C), podglądamy schowek lub wklejamy do dowolnego edytora tekstowego.